

The background of the slide is a complex, abstract geometric pattern composed of numerous triangles of various sizes. The colors range from light blues and greens on the left to deep purples and oranges on the right, creating a vibrant, mosaic-like effect.

How to Access Supplemental Security Income (SSI)

Accessing Supplemental Security Income (SSI)

SSI provides monthly payments to adults and children with a disability. To qualify, your income and resources must be below a specific financial limit.



I may be eligible to receive SSI (even if I am already receiving other benefits)!

What is SSI used for?

SSI is a federal program that is funded by taxes. It can provide me with money for basic needs like food, clothing, and shelter.



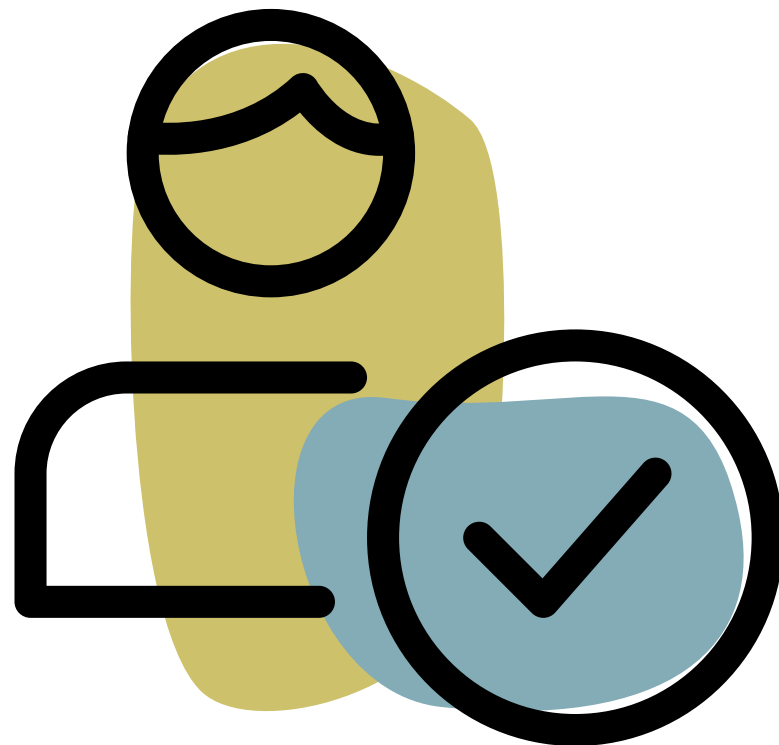
Who is Eligible?

Anyone who:

- Is age 65 or older;
- Is blind; or
- Has a qualifying disability (like ASD).

And who:

- Has limited income.
- Has limited resources.
- Files an application.



I can find out if I might be eligible for SSI before I apply by using the Benefit Entitlement Screening Tool.

SSI Federal Benefit Rates

The chart below refers to the amount I may get from the federal government only. These are only estimates. The amount I receive may be different.

**Live alone or pay your share
of food and housing costs**

January 2023



Individual/Child

\$914

Couple

\$1,372

Live in the household of another

January 2023

Individual/Child

\$609.34

Couple

\$915.00

Live in a Medicaid Institution

January 2023

Individual/Child

\$30

How to Qualify

With SSI, I don't need to have worked or paid Social Security taxes to qualify.

My income and the things I own impact my ability to qualify for SSI.

I may be able to get SSI if my resources (the things I own) are worth no more than \$2,000.



How to Apply

I can apply for SSI benefits by:

- Visiting the Apply Online for Disability Benefits website to start the process online.



- Calling 1-800-772-1213 (or TTY 1-800-325-0778 if I am deaf or hard of hearing) and making an appointment to apply for SSI.

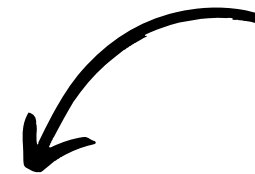


Requesting an Appointment Online

When making an appointment online, I will need to give them my:

- Name
- Date of Birth
- Social Security Number
- Mailing Address
- Phone Number
- Email Address (optional)

Video
Guide!



Requesting an Appointment Online

After applying online, a Social Security Representative will schedule an appointment where they will help me apply in person.

The appointment details, including the date and time, will be sent to me by mail and email (if I provided it).



Needed Materials

A worker will help me figure out what materials I need. The SSI Office made a checklist I can use to organize my materials. It is linked here and outlined below:

- Social Security Card or Number
- Proof of Age (birth record)
- Citizenship or Noncitizenship Status Record
- Proof of Income
- Proof of Resources
- Proof of Living Arrangements
- Work History

What to Expect at your Appointment

If I am applying in person, I will have an interview. During the interview, a social security representative will ask me questions and help me fill out paperwork.

The interview will take place either in my local Social Security office or by phone. It will take at least 1 hour.



After my Interview

After my interview, it generally takes 3-5 months to get a decision. It could take more or less time.

They may request additional information or require me to have additional examinations or medical appointments. I need to complete these requests promptly.

If I am required to do additional examinations, they will be paid for by the state.

Completing the Application Online

Another way that I can apply for disability benefits is by doing the application completely online through the online portal.

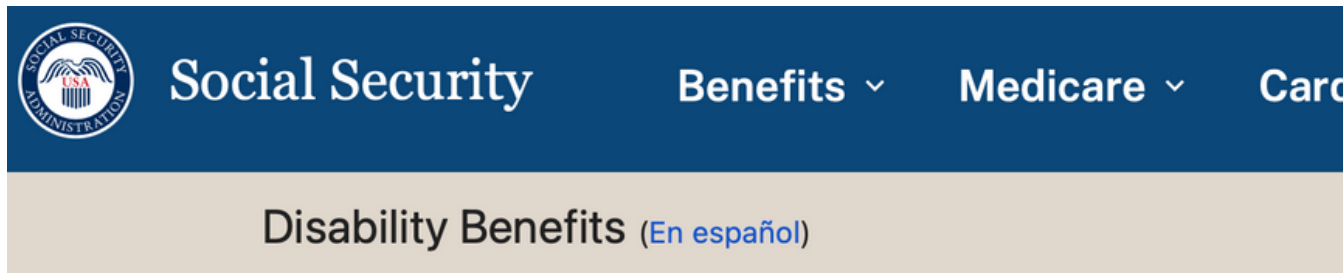


Table of Contents

[The Basics About Disability Benefits](#)

[The Disability Application Process](#)

[Information You Need to Apply](#)

Social Security Disability Insurance programs provide assistance to people who are unable to work because of a disability.

Before you apply, please read the information on this page. You will need to complete an application form and provide supporting documentation.

[Apply for Disability](#)



Completing the Application Online

On the online portal I will see a section titled *Getting Ready*. This gives me the requirements to apply online and helps me know what materials I will need to complete the application.

Apply Online for Disability Benefits



Getting Ready

Before you start your application, we recommend that you take a moment to prepare yourself by reviewing a few items:

1. Make sure you meet the [requirements to apply online for Disability](#);
2. [Gather the information you need](#) to complete the application process

Completing the Application Online

I have the option to start a new application or return to one that I already started. The online application process may take a few hours to finish. I can take breaks and return to my application when ready.



Apply & Complete

After signing in to your **my Social Security** account, applying for disability is a multi-step process that may take between **one to two hours** to complete depending on your situation. You can save your application as you go, so you can take a break at any time.

[Start a New Application](#)

or

[Return to Saved Application Process](#)

Completing the Application Online

After I have submitted my application online, a representative may contact me with updates or questions about my application.

I can also check the status of my application online by signing into my social security account.

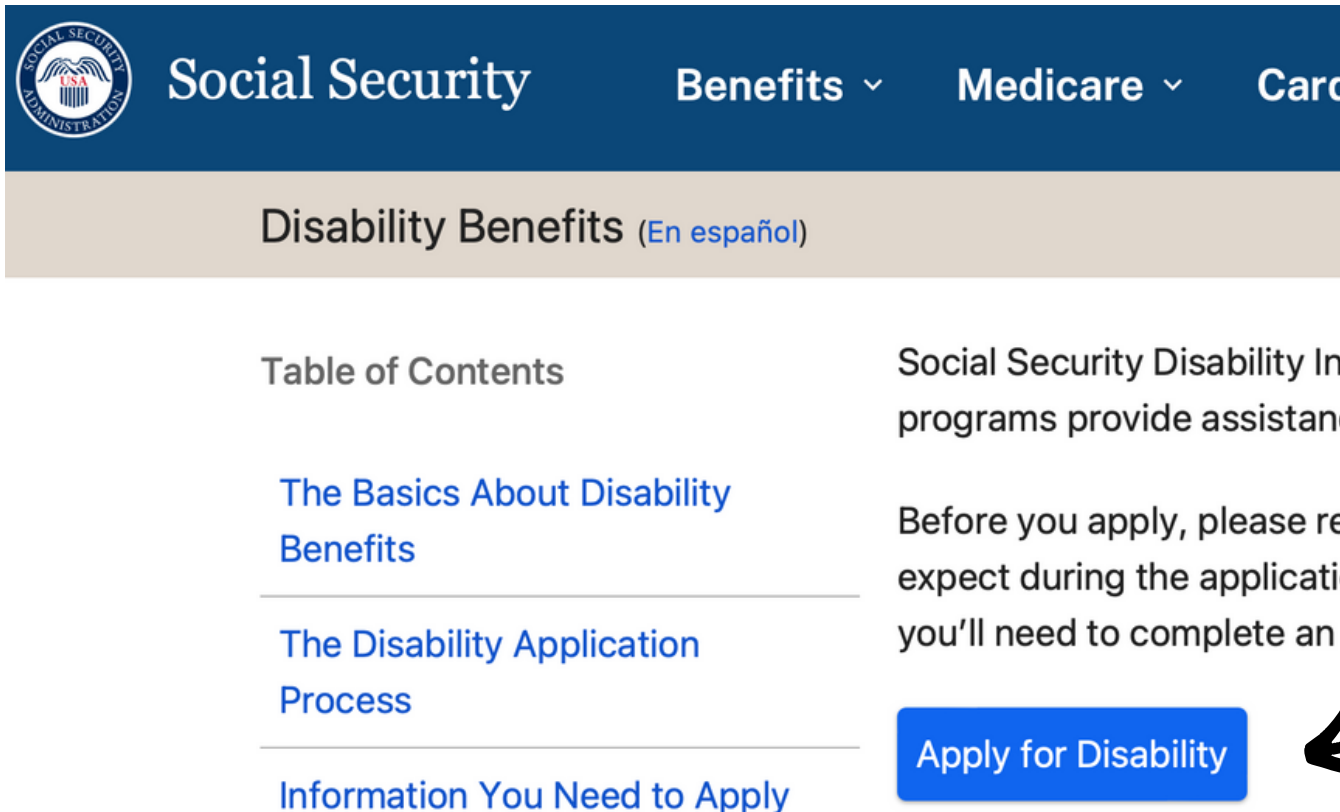


Follow Up

Once you have submitted your application, a representative may contact you with updates or questions about your application. You may check the status of your online application by signing in to **my Social Security**.

What if I need help applying?

I can have someone help me fill out the application on my behalf. The person helping me will go to the online portal and click *Apply for Disability*.



The screenshot shows the Social Security Administration website. At the top is a dark blue header with the SSA seal on the left, followed by the text "Social Security". To the right are links for "Benefits", "Medicare", and "Cards". Below the header is a light beige banner with the text "Disability Benefits" and a link "(En español)".

Below the banner, the page is divided into two columns. The left column contains a "Table of Contents" with four links: "The Basics About Disability Benefits", "The Disability Application Process", and "Information You Need to Apply". The right column contains the text "Social Security Disability In programs provide assistan" and "Before you apply, please re expect during the applicati you'll need to complete an". At the bottom right of the right column is a blue button labeled "Apply for Disability". A large black arrow points from the right side of the page towards this button.

Social Security Administration

Disability Benefits ([En español](#))

Table of Contents

- [The Basics About Disability Benefits](#)
- [The Disability Application Process](#)
- [Information You Need to Apply](#)

Social Security Disability In programs provide assistan

Before you apply, please re expect during the applicati you'll need to complete an

Apply for Disability

What if I need help applying?

When they start the process on my behalf, they will indicate they are filling out the application on my behalf.

Who Is Completing This Application?

Tell us information about the person completing this application:

☐ I am applying for myself.

☒ I am helping someone who is not with me, and therefore cannot sign the application at this time.

Even though they can fill it out on my behalf. I am the only one who can sign the application. Until I sign it the application can not be processed.

What if I get denied?

If my request for SSI gets denied, I have the right to ask for the decision to be reviewed again.



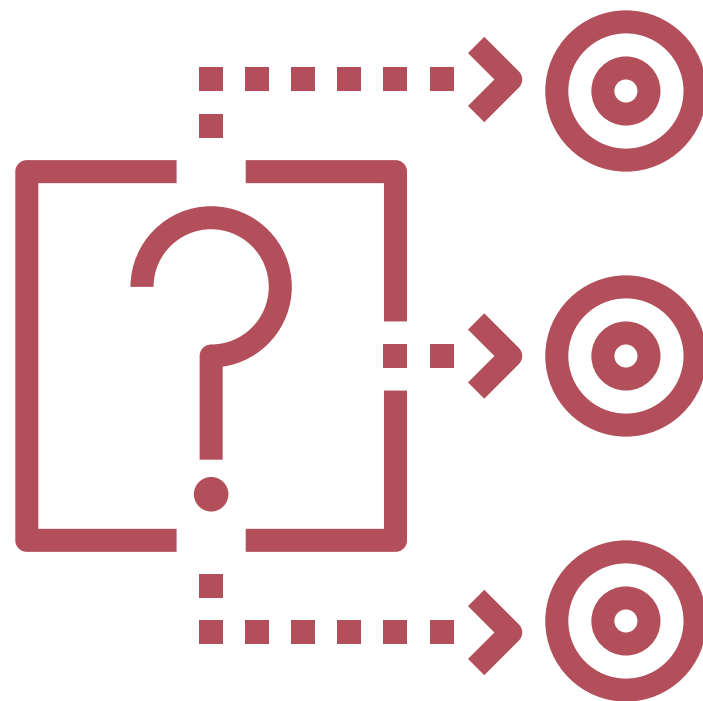
This process may take a long time. It's important that I respond to any requests for additional information from the hearing office in a timely matter.

If I need to appeal, I can make my request online or by calling my local social security office who will send me the form by mail.

How SSI Works

It's important to remember that not everyone gets the same amount. I may get more if I live in a state that adds money to the federal SSI payment. I may receive less if I or my family have other income.

Where I live and who I live with can also impact how much SSI I get. I won't know how much I will receive until I apply.





Resources

The Social Security website has a list of resources that answers common questions such as finding an office close to you, how to get needed documents, medicaid coverage and more.

Disability Hub MN has gathered some resource and answered common questions that you can refer to if needed.

The ARC has a guide to SSI that briefly goes over the process.